

# Harpur Lane



---

Harpur Lane, Leixlip, Co. Kildare

# 📍 Introducing Harpur Lane

The Land Development Agency (LDA) presents Harpur Lane Apartments, adjacent to the picturesque village of Leixlip, Co. Kildare, a well connected, bustling town with an abundance of amenities for all. Located close to Castletown House estate with rolling parklands by the banks of the River Liffey, residents enjoy a great sense of luxurious space, perfect for children and adults to explore and enjoy.

Leixlip is an historic village known for having great amenities for everyone in the family. An abundance of schools and crèches are located in the immediate area, giving an enviable amount of choice for every age group. For sports enthusiasts, there are well-established athletics, GAA, soccer, rugby and basketball clubs within walking distance, while water sports on the River Liffey and Leixlip Reservoir will please even the biggest dare devils in the family. Or simply enjoy the parklands in the neighbouring Castletown Estate.

For commuters, the village is close to the N4/M4, which leads on to the M50, opening up the country's network of main roads. Commuters can access Dublin City Centre in less than 30 minutes or choose between regular Dublin Bus services and train connections from Leixlip Louisa Bridge train station. Harpur Lane Phase 2 comprises two-bedroom apartments, available to rent under The LDA Cost Rental scheme.

To find out if this Cost Rental Scheme is for you, read the below eligibility requirements and check our [website](#) for more information.



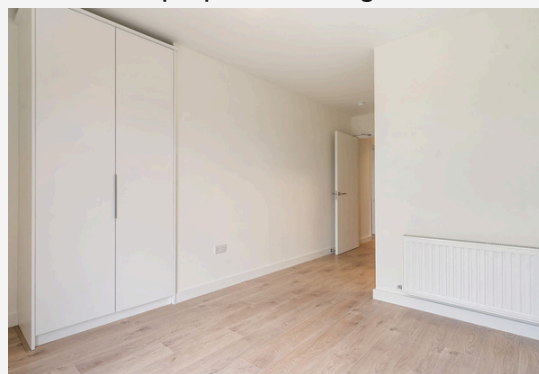
Sample photo of kitchen.



Sample photo of living room.



Sample photo of bathroom.



Sample photo of bedroom.

## Apartment Features

**The apartments are provided unfurnished with:**

- Fully fitted kitchen and white goods.
- Integrated wardrobes in double rooms.
- Bathroom fittings. Blinds and flooring throughout.
- Highly efficient A rated home heating and hot water will be supplied via individual exhaust air heat pumps located in each unit.
- Heating will be delivered via low temperature wall mounted radiators with thermostatically controlled heating zones per unit. These state of the art always on systems are designed to be efficient and provide high levels of occupant comfort.

## Apartment Types

The LDA is offering apartments consisting of studios, one-bedroom and two-bedroom apartments for rent under this initial Cost Rental application process. Please see the below for eligibility criteria:

Apartment type	Rent per month	Suitable for	Household net income threshold
1-bedroom apartment	€1,357	A single person, or cohabiting couple.	€46,526 - €59,000
2-bedroom apartment	€1,585	Two adults, a cohabiting couple, a cohabiting couple and one adult, or cohabiting couple/lone parent with one child.	€54,343 - €59,000

**Household types include:**

- Families.
- Friends sharing.
- Cohabiting couples.



# 📄 Application Process

Register your interest on The LDA website at [LDA Cost Rental](#) and follow the instructions. All registrations are online and cannot be made by post, email or over the phone.

**To be eligible for Cost Rental Housing you must meet the following criteria:**

- Your net household income is below €59,000 per annum. Net household income is the combined income of all householders over 18 years. Please refer to your payslips for Net Pay. Use this [Net Income Calculator](#) to understand how this is calculated.
- You are not in receipt of any social housing supports (including Rent Supplement or HAP).
- You do not own a property.
- Your household size matches the size of the property advertised (All members of the household must be living in Ireland at the time of applying).
- Your household has only entered one application.
- You can afford to pay the cost of rent for the home. Affordability is measured as 35% of net household income.

\* Terms and conditions for cost rental housing in Ireland are set out in the [Affordable Housing Act 2021](#).

Once you have selected the property that you are eligible for, you are invited to enter your details into a self-service eligibility checker and register your interest. Applicants will be required to prove how they calculated their [Net Household Income](#), with supporting documentation.

You must first register your interest in one property type and indicate your eligibility, by providing the information requested when applying through [LDA Cost Rental](#).

